

Tribos 501

Aufstellenanleitung der TRIBOS 501

Instruction of setting up TRIBOS 501

Instruction de montage TRIBOS 501

Istruzioni per il montaggio TRIBOS 501

Instruccion para el montaje TRIBOS 501



Tribos 501
NFP by Dieter Schulz

Natural and Functional (NFP) by D. Schulz

Tribos 501 derived from nature

Setting-up of a Total Prosthesis

Despite the progress and developments in dental technology, many problems still persist with complete dentures.

These dentures are often ill-fitting and non-functional. Long suffering patients often have to adapt their eating habits to conform to the capability of the denture. This can lead to a decline in quality of life, and in extreme cases, malnutrition and a shorter lifespan caused by disease.

Unfortunately, this is a scientifically proven fact.

With his considerable experience in the NAT/NFR wax-up technique, Dieter Schulz addressed these problems and eliminated them when he developed *Tribos 501* acrylic teeth, using a logical and simple technique. As is often the case in the development of new materials, the shape of the teeth and the process through which they are made, conform closely to nature.

120 million years ago, the "Tribosphenic" molar was created, heralding the development of the human tooth. The discovery of "Homo Rudolfensis" 2,5 million years ago included a mandible with the registration UR 501.

From these developments of human teeth, the name *Tribos 501* emerged.

Due to carefully integrated increase in free space on the occlusal surface of the *Tribos 501*, a simple balanced set up is achieved, even when mounted on an average-valued articulator. Despite these built in free spaces, the *Tribos 501* acrylic teeth slide against their antagonists almost as if magnetically attracted. As a result of the perfect occlusion, a considerable amount of time is saved in the positioning of the teeth to a full contour.

Many current concepts in dental technology of setting up and occlusal bite registration can be implemented with *Tribos 501*. The unique design of the occlusal surface and the easy and comprehensible method of assembling the *Tribos 501*, will enable all dental technicians to achieve a functional and natural prosthesis.

„The sophisticated Relief of our teeth is related to the Tribosphenic Molar.

This is a result of an old history dated millions of years ago.

The *Tribos 501*, perfect portrayal where shape, function and aesthetics are taken from nature, taking into consideration all the scientific teeth elements. This assumption is essential and indispensable for a natural occlusion and correct function of the entire masticatory system.

“Zitat *Ottmar Kullmer, research institut Senkenberg, Frankfurt*

***For the active work, support and graphic material,
We would like to thank:***



Dieter Schulz



Michaela Genenger

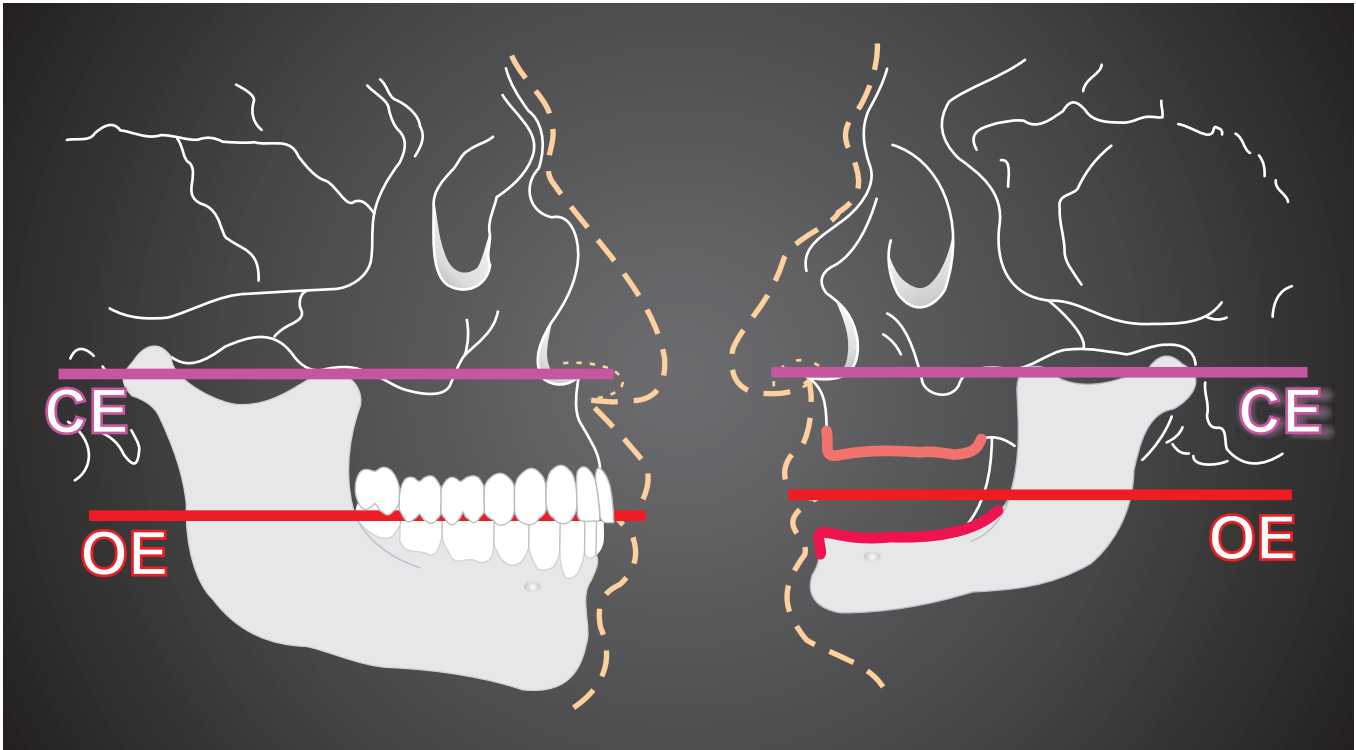


Helmut Schad

Maxillomandibular relationship - Comparison between dentulous and edentulous mouths

Dentulous

Edentulous



Data transmission

The transmission of data is an essential pre-requisite for a precise adaptation of the correct measurements of the patient's mouth. The maxillomandibular relationship regarding the edentulous mouth differs from that of the dentulous mouth.

Consequently, maxillomandibular relationship data should be determined and registered on a facebow, and transferred onto an articulator.

To determined the relations:

- From UJ to facebow
- From UJ to LJ
- From condyle to facebow

Device for the transfer of the patient's condition on the articulator



Articulator pin for the precise transfer of the measurements of the jaw



Suggested preparation

Setting up the mandible with the registration articulator pin and the anterior impression



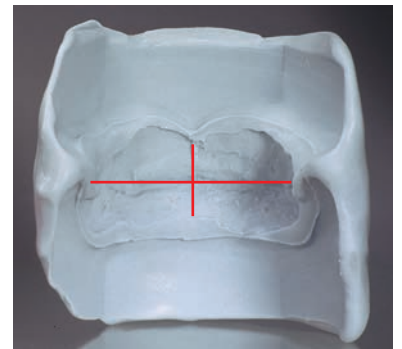
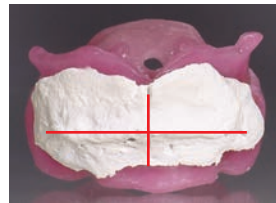
Silicone Key for the transfer of the measurements of the jaw



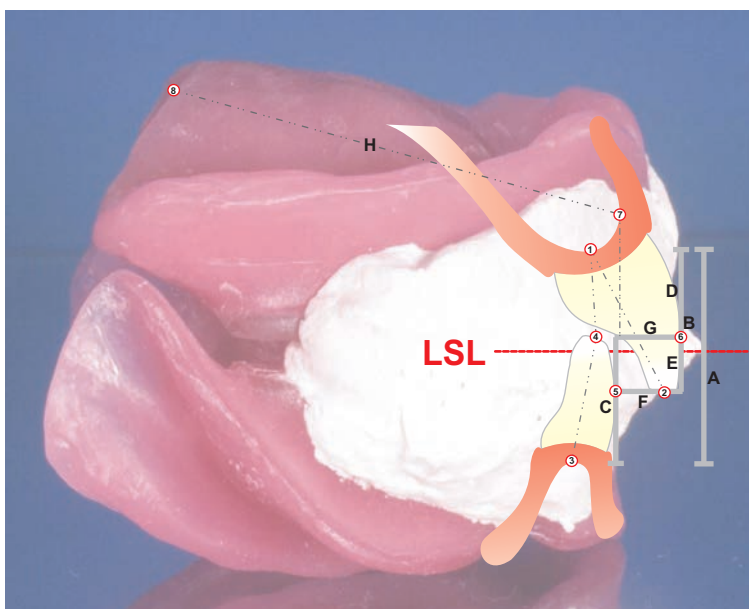
Overview on the available space between the UJ and LJ.



Impression and silicone key - Data transfer from the articulator pin.



Sagittal cross-section analysis - SSA



SSA - Measurement parameters in the NFP

Point	Designation	Measuring	Distance
1	Caudal point of the frontal area of the UJ - Alveolar process	A	1 - 3
2	Cutting edge of the upper central incisal	B	1 - 2
3	Cranial point of the frontal area of the LJ - Alveolar process	C	3 - 4
4	Cutting edge of the lower central incisal	D	1 - 4
5	Labial limits of the lower central incisal	E	4 - 5
6	Labial limits of the upper central incisal	F	2 - 5
7	Anterior limits of the UJ - Alveolar	G	6 - 7
8	AH - Line	H	7 - 8

Remove the Silicone Key from the finished lip line



LJ with silicone key

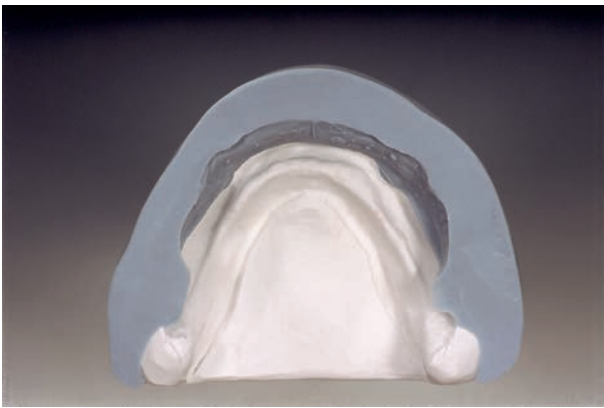
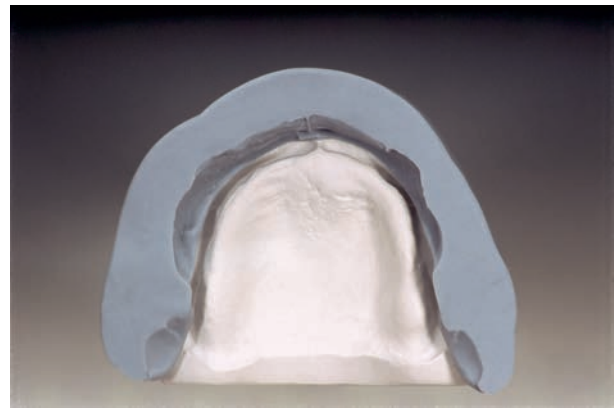
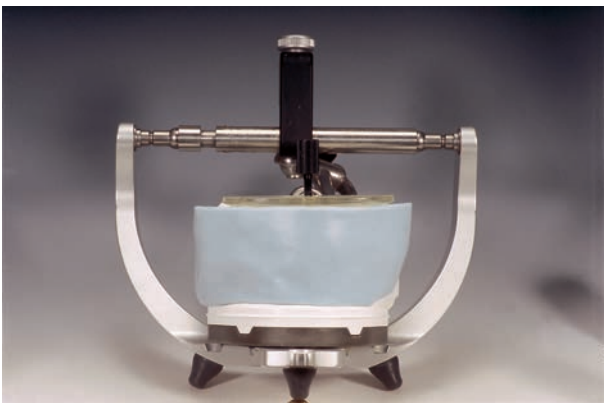


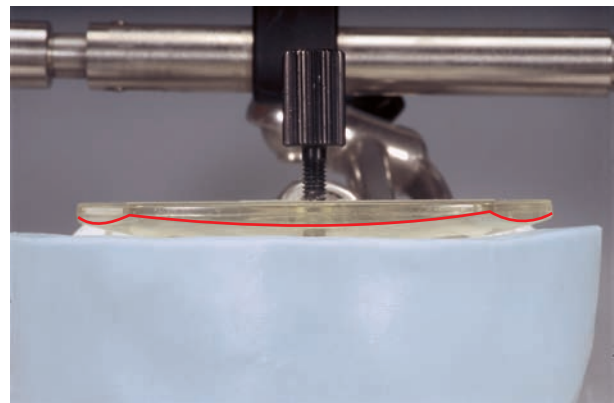
Illustration of the UJ with the silicone key



LJ with silicone key and calotte on the articulator



Detailed view (Wilson, Spee curve)

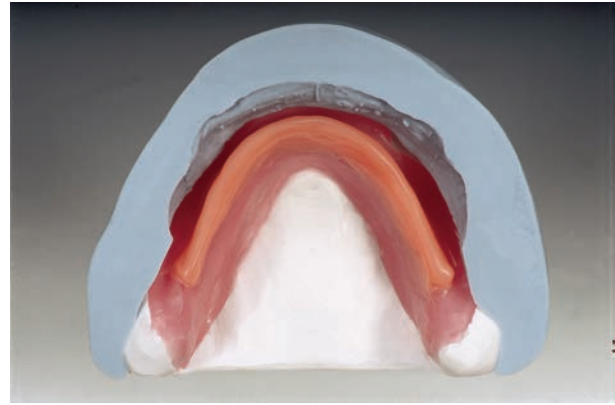


Space relation to LJ setting



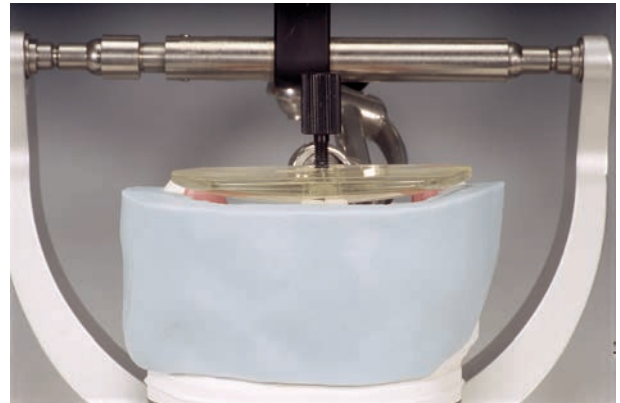
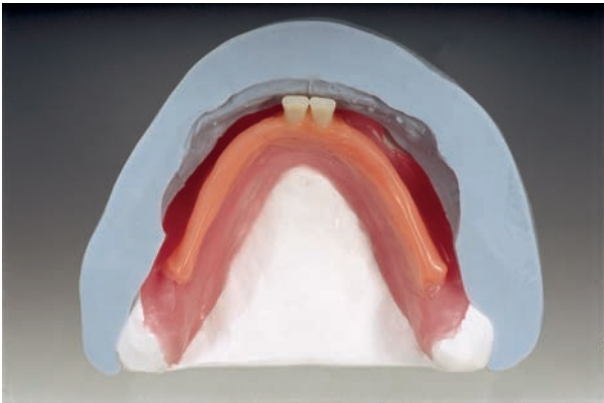
Basis of the setting-up:

- Block out the undercut areas with Standard or Tribos (new) modelling wax
- Apply the Light Curing Preci Trays, Hardy (modelling wax) or the new Tunnel wax.

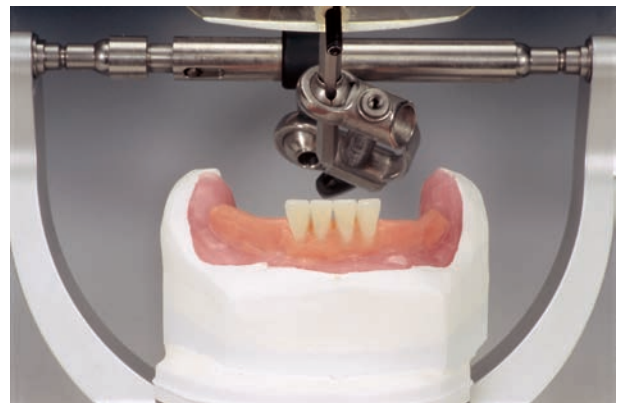
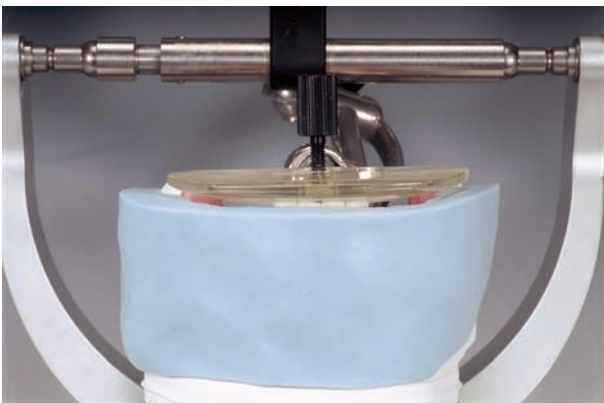


Setting up the anterior teeth

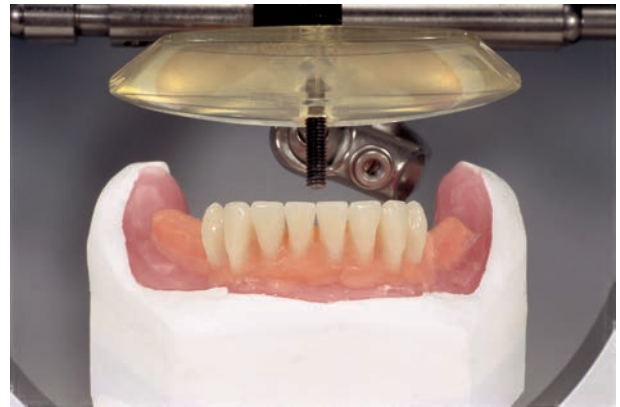
Position the lower incisal central teeth according to the silicone key and calotte



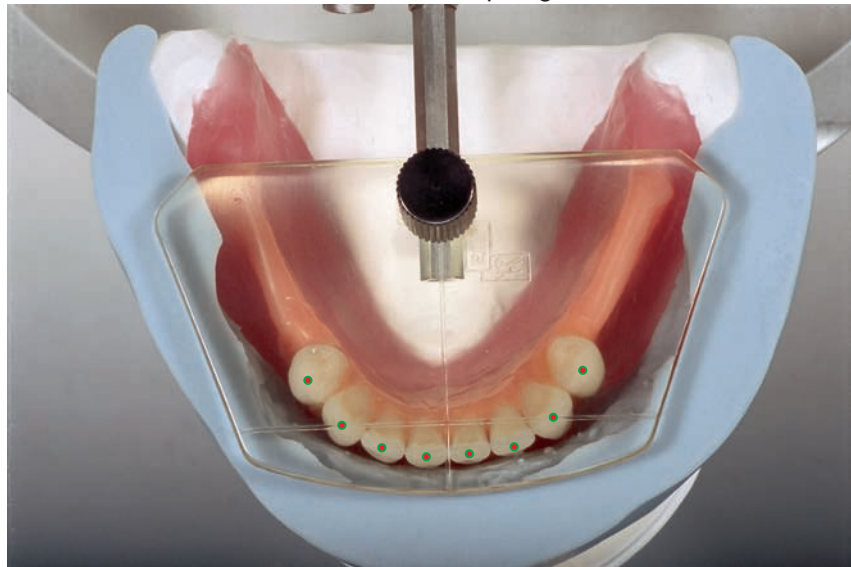
Setting up the lateral incisal teeth



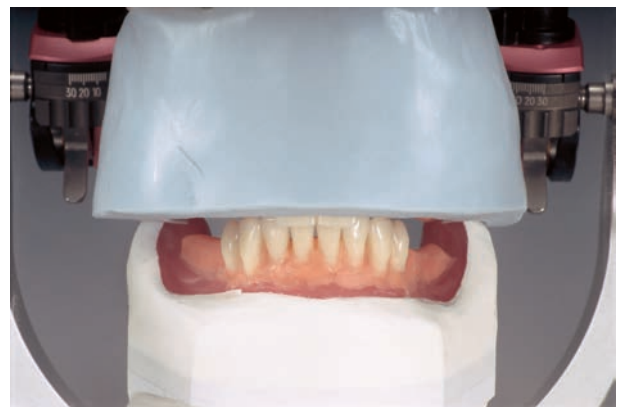
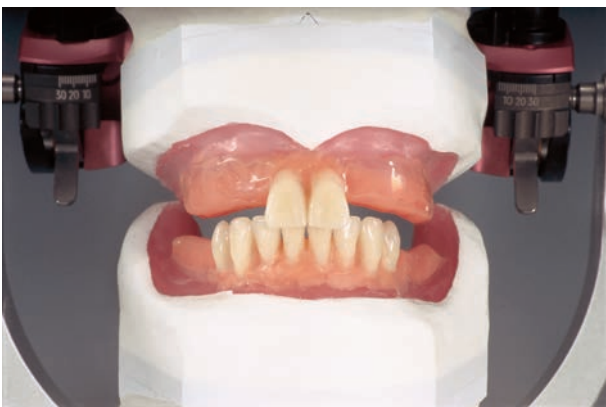
Setting up the canine and the first premolars



Contact of the cusp edges



Setting up of the upper central incisal



Setting up as far as the first premolars in the UJ



Final view of the setting up of anterior teeth



Instruction for setting up the posterior teeth

Setting up of the second lower premolars



Setting up of the first lower molars



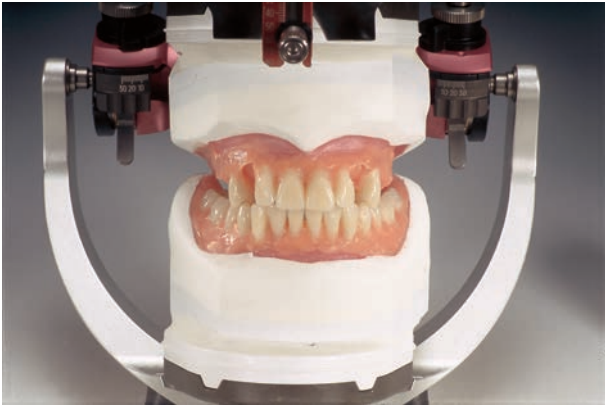
Bilateral setting up of the LJ



Contact of the cusps tip with the calotte

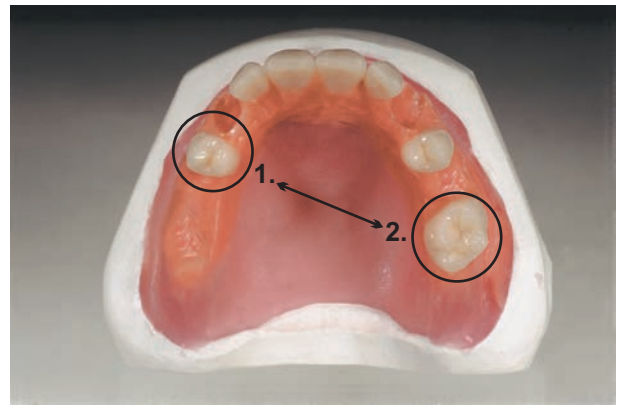
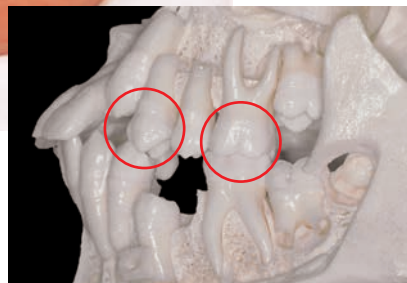
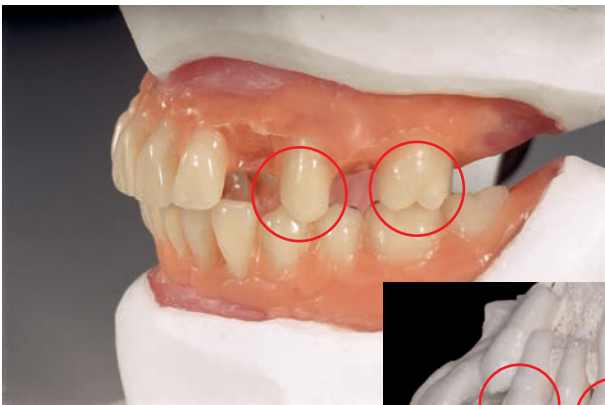


Extraction of the upper canine according to the natural dentition



Natural Dentition

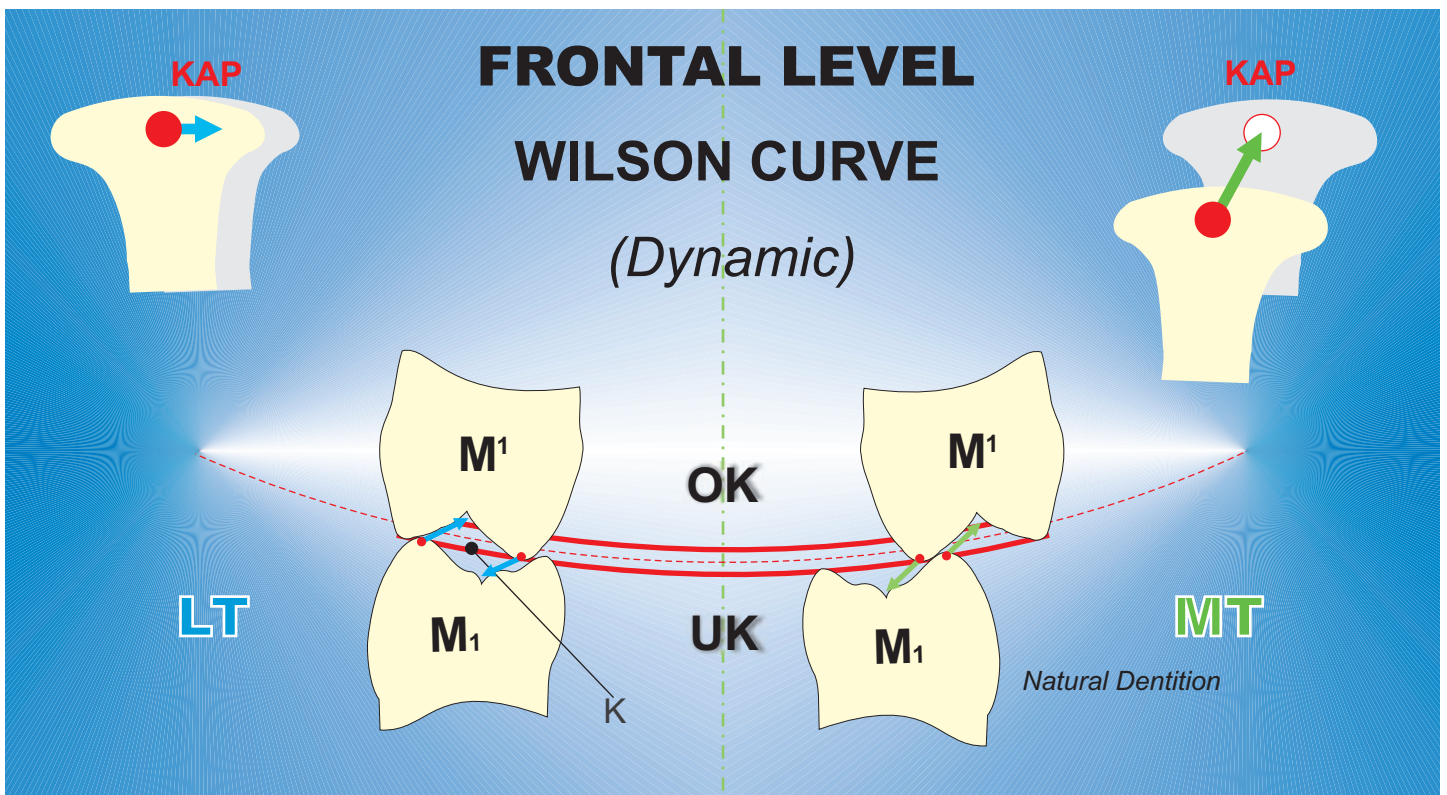
Setting up of the posteriors according to the natural dentition



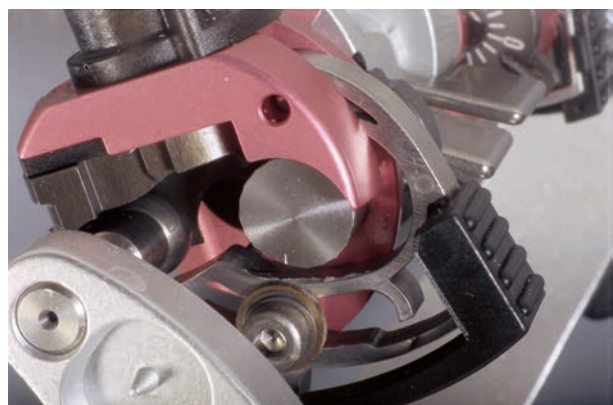
Diagonal setting up of 4 to 6 and condyle of the first posterior

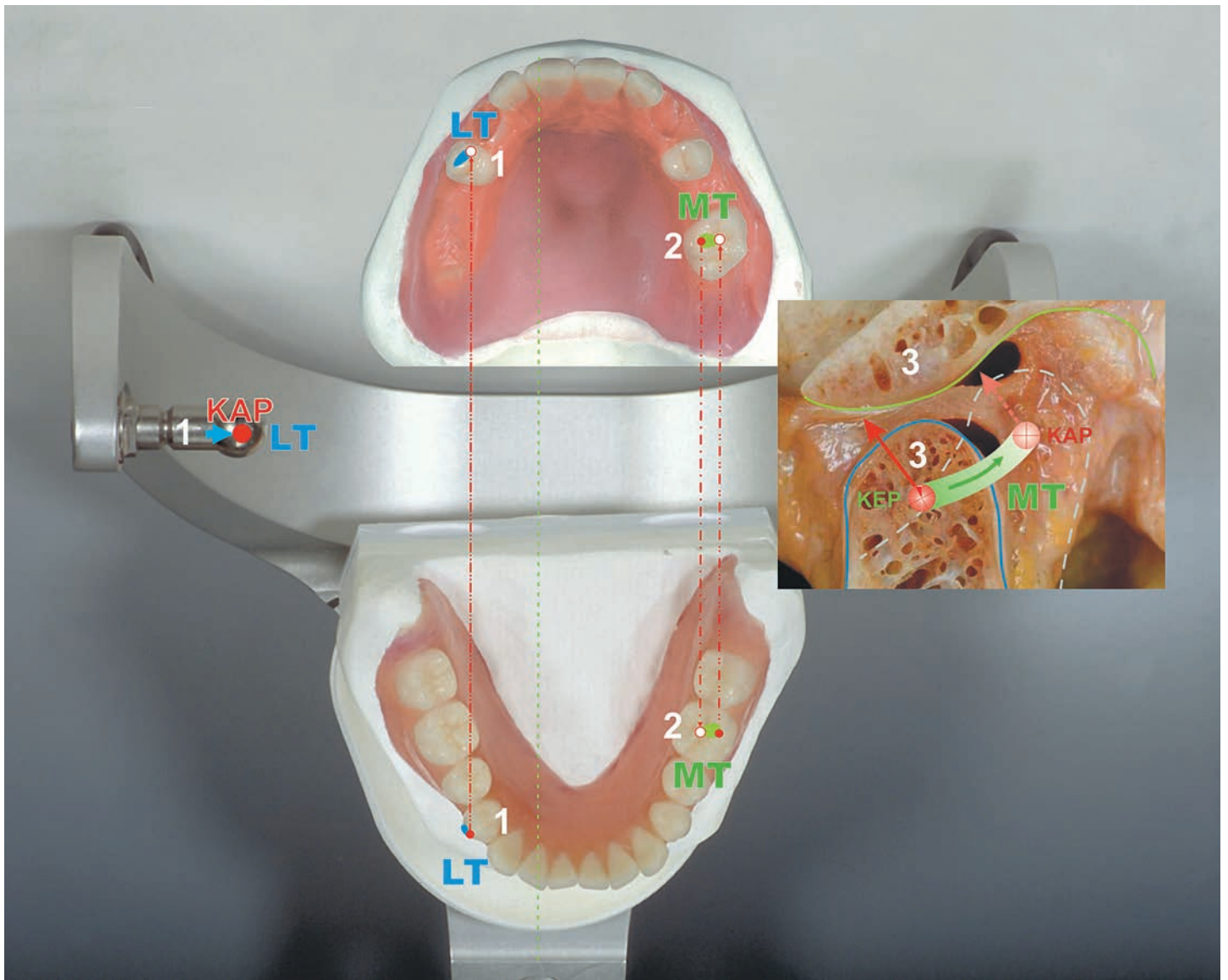


The natural functional setting of the TRIBOS teeth ensures high stability and dynamics (K - Compression chamber)

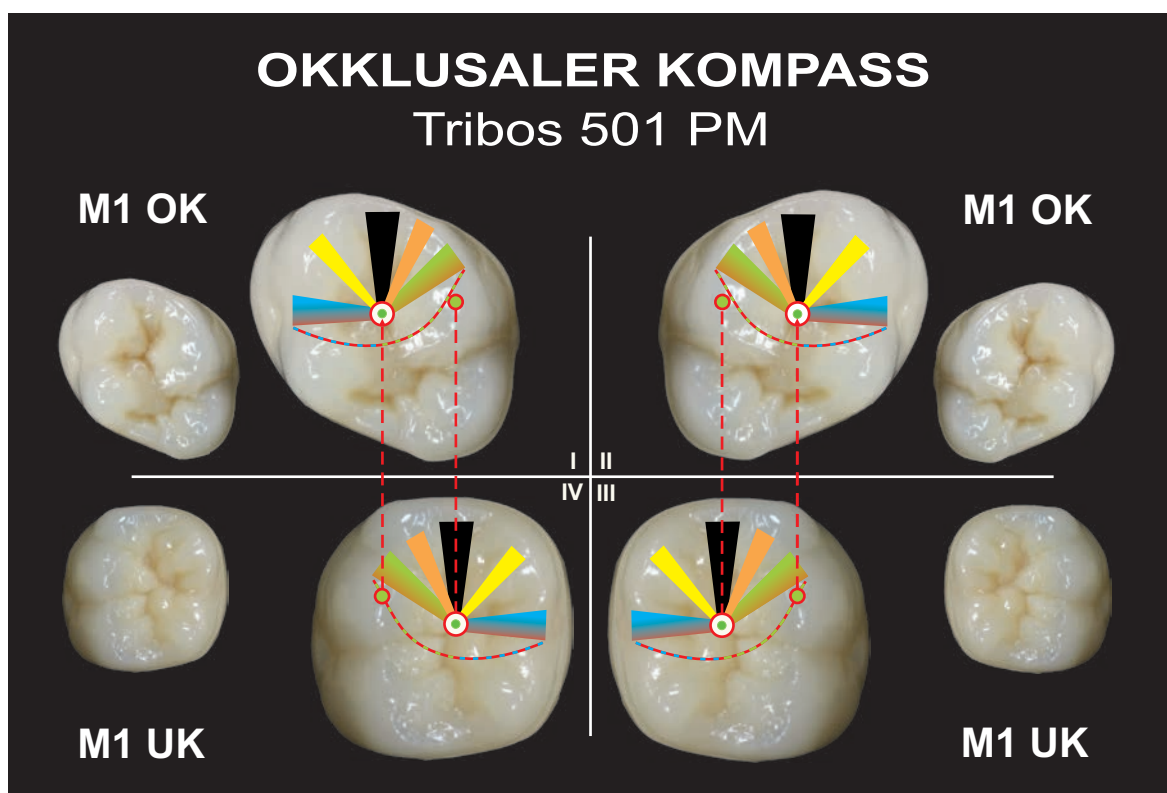


Adjusting the mediotrusion path





Calibrating all positions successively results in a natural functionality



Setting the second posterior



Completion through the second upper molar on both sides



View with silicone key, correct construction of Wilson and Spee Curve



Completion of the second premolar



Insertion of the canines according to the desired concept



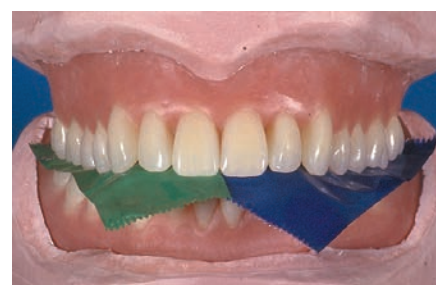
Complete finished modelling work



Grinding the centric



Grinding the work (blue) -
and balancing sides (green)



Michaela Genenger: The collaboration of “red” and “white” functional areas



- 1 Nature as tutor and example
- 2 Shaping the surface of the wax-up in shorter time with less handling
- 3 Dental floss for the interdental spaces
- 4 Surface compaction using wax polish
- 5 Complete prosthesis in wax, Fabricated with all functional aspects taken into consideration



Material used:

TRIBOS Front teeth R14, L7
 TRIBOS Posterior teeth SS
 (Secondary morphology small)

TRIBOS Modelling Wax Block
 Solidus 84

Tooth brush

Dental floss

Polishing cotton



Helmut Schad: Wax modelling and conversion to acrylic



Gingival section with
 TRIBOS Modelling wax Block



After preparation, build up the surface structure
 with rotating instruments

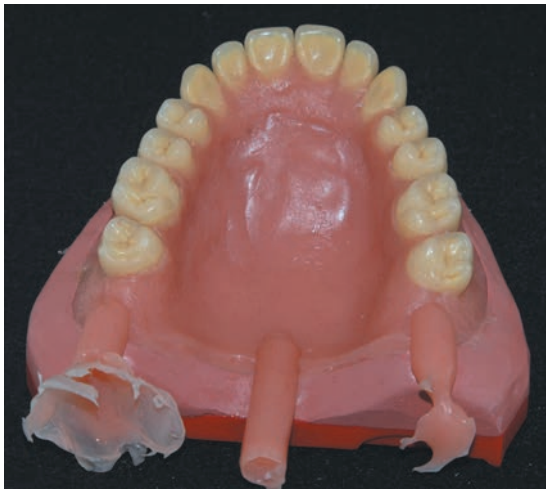


Embed the finished model
 in Agar-Agar duplicating gel



The cast acrylic prosthesis being removed from the mould.
 Exact detail and clean reproduction of the surface structure





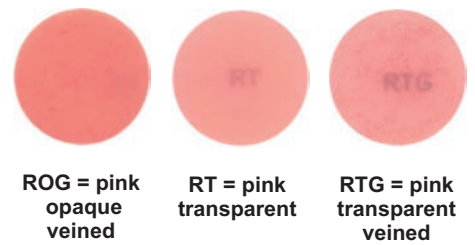
After embedding in Agar-Agar and casting the prosthesis with Prothepress, an exact reproduction of the previous model



Less finishing work required through reproduction in perfect detail



Time-saving, Natural, Functional Dentures!





gebdi Dental-Products GmbH · Industriestraße 3a · D-78234 Engen · Germany
www.gebdi-dental.com · e-mail: info@gebdi-dental.com